

EVIDEN

Securing the Future of Manufacturing Excellence

Comprehensive Approach to Operational Technology Security

OT Security

Our Solutions



Penetration Testing

Architecture & Security Requirements

Organization, Governance, Policies & Procedures

Security Program

Security Awareness

Assessment & Audit

Vulnerability Management

OT-Security Consulting Services

OT-Security Solution Landscape



Network-Monitoring & Visibility

Network-Segmentation

Endpoint-Security

Secure Remote Access

Security Event Monitoring (SIEM)

Security Operations Center (OT-SOC / V-SOC)

Incident Response & Reporting



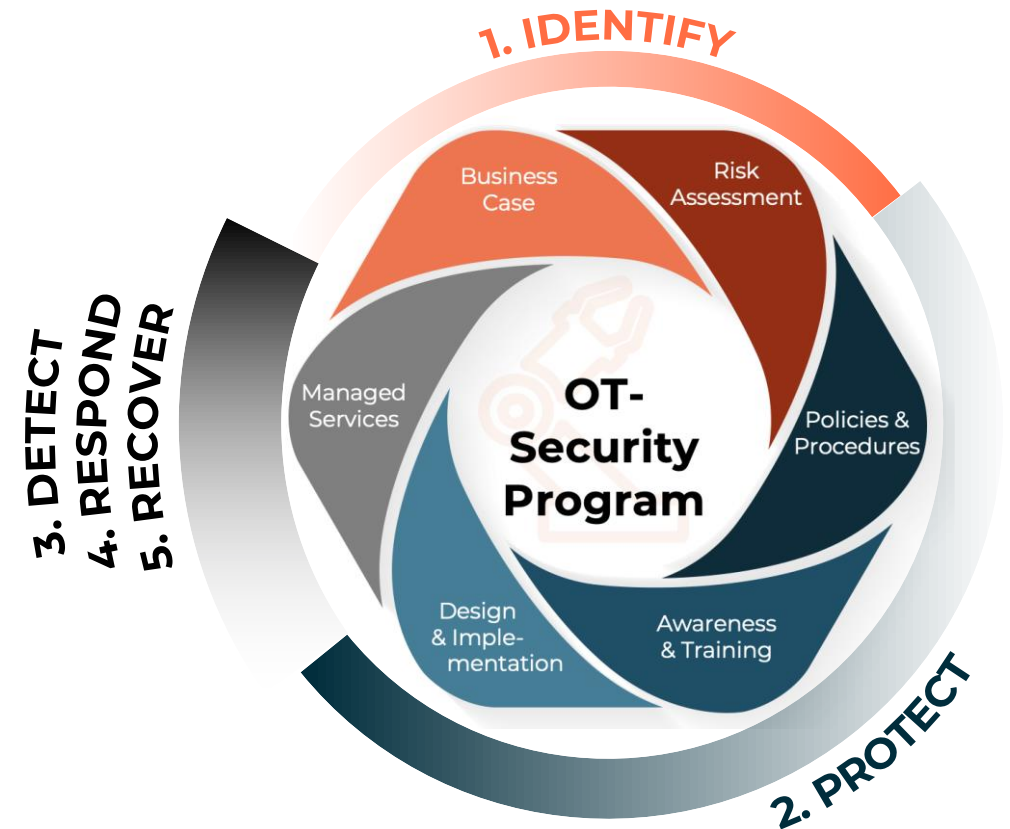
© Eviden SAS

Transforming Your OT Security Journey

A Tailored Approach Leveraging Best Practices for Automotive Excellence

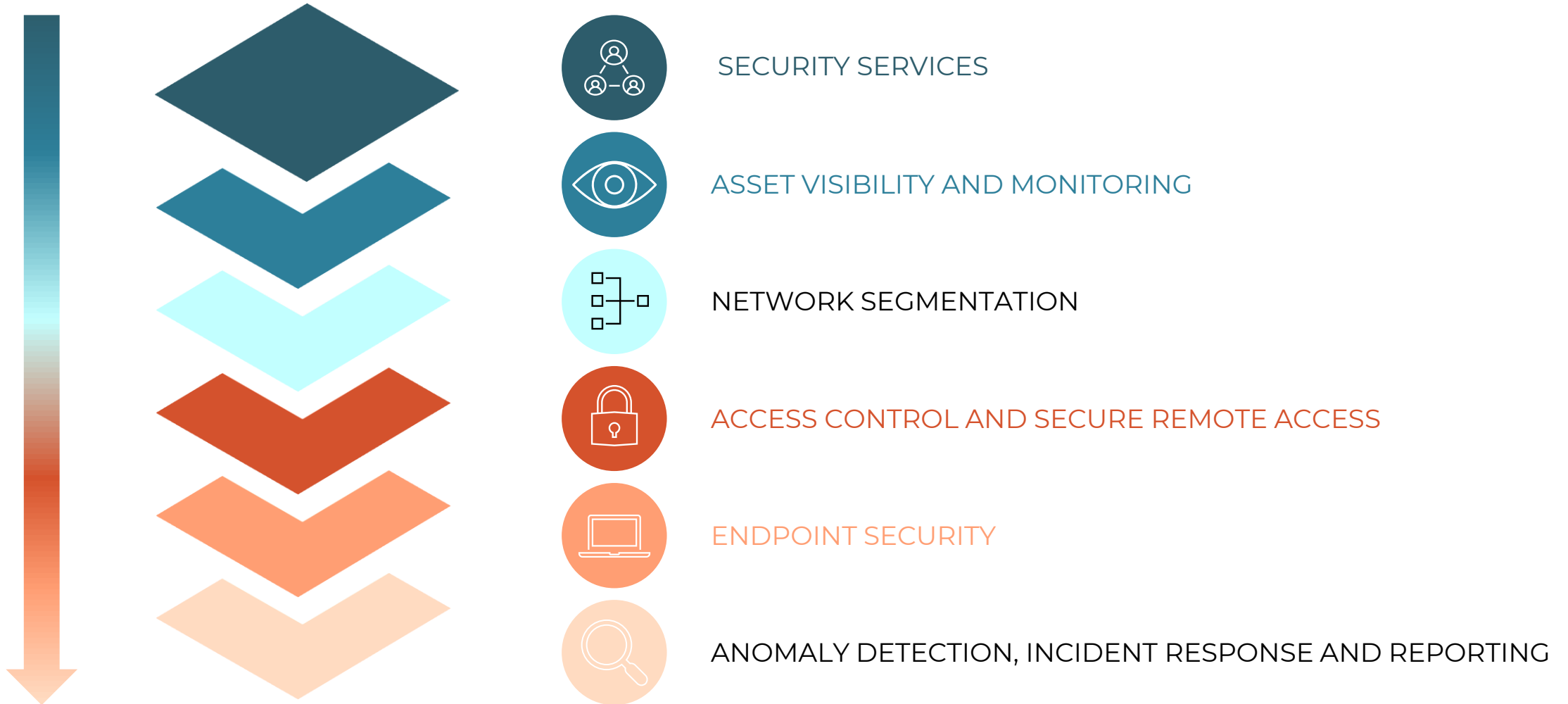
In the age of smart manufacturing and connectivity, cybersecurity is an operational imperative, not just an IT concern. That's why we focus on a holistic approach, incorporating the NIST Cybersecurity Framework and other frameworks, with additional tailoring for the automotive industry, by following best practices:

- 1. Business Case:** We start by establishing the compelling financial and operational reasons for elevating OT security. In an industry where a single breach can cost millions, the business case is clear and straightforward.
- 2. Risk Assessment:** Our team conducts specialized vulnerability assessments, focusing on both manufacturing processes and vehicle technologies. We also ensure you meet automotive-specific security standards like ISO/SAE 21434.
- 3. Policies and Procedures:** With a focus on zero-trust architecture and data governance, we outline robust policies tailored for the complexities of the automotive sector.
- 4. Awareness and Training:** We don't just set it and forget it. Our program includes automotive-themed specialized training for your OT engineers to build a security-conscious culture.
- 5. Design and Implementation:** Our implementation stage includes converging IT and OT cybersecurity measures under a specialized Security Operations Center (SOC). This SOC is unique in its focus on automotive-specific risks.
- 6. Managed Service:** We offer end-to-end security management services, which includes constant vigilance through 24/7 monitoring of your automotive OT environment.



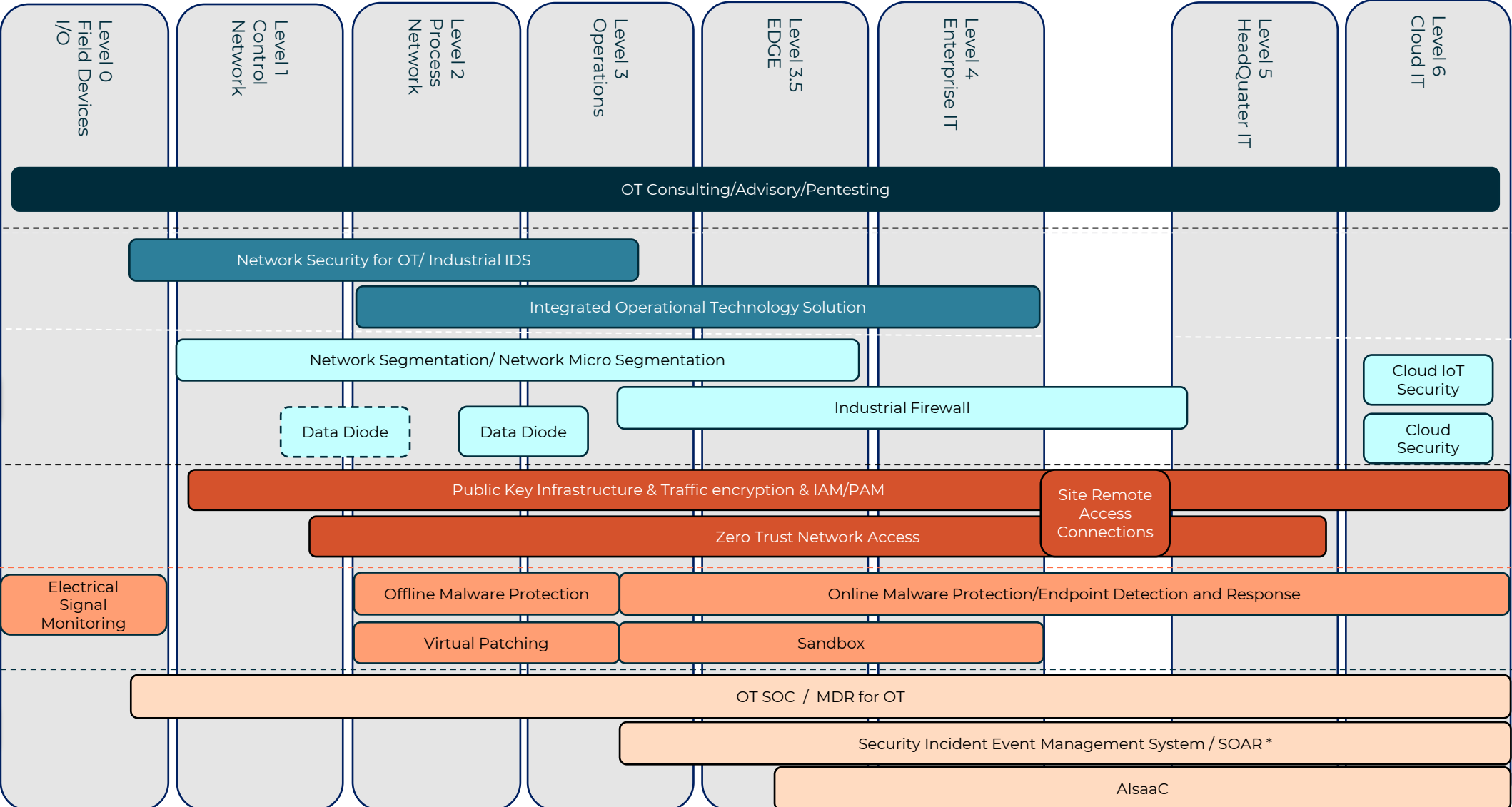
OT-Security in Layers

Defense in Depth



EVIDEN

IoT & OT Solution Landscape



OT Security Potential with Eviden's Expertise

A Complete OT Security Portfolio: Consulting to Incident Response, Tailored for Automotive Excellence

1. Get Visibility

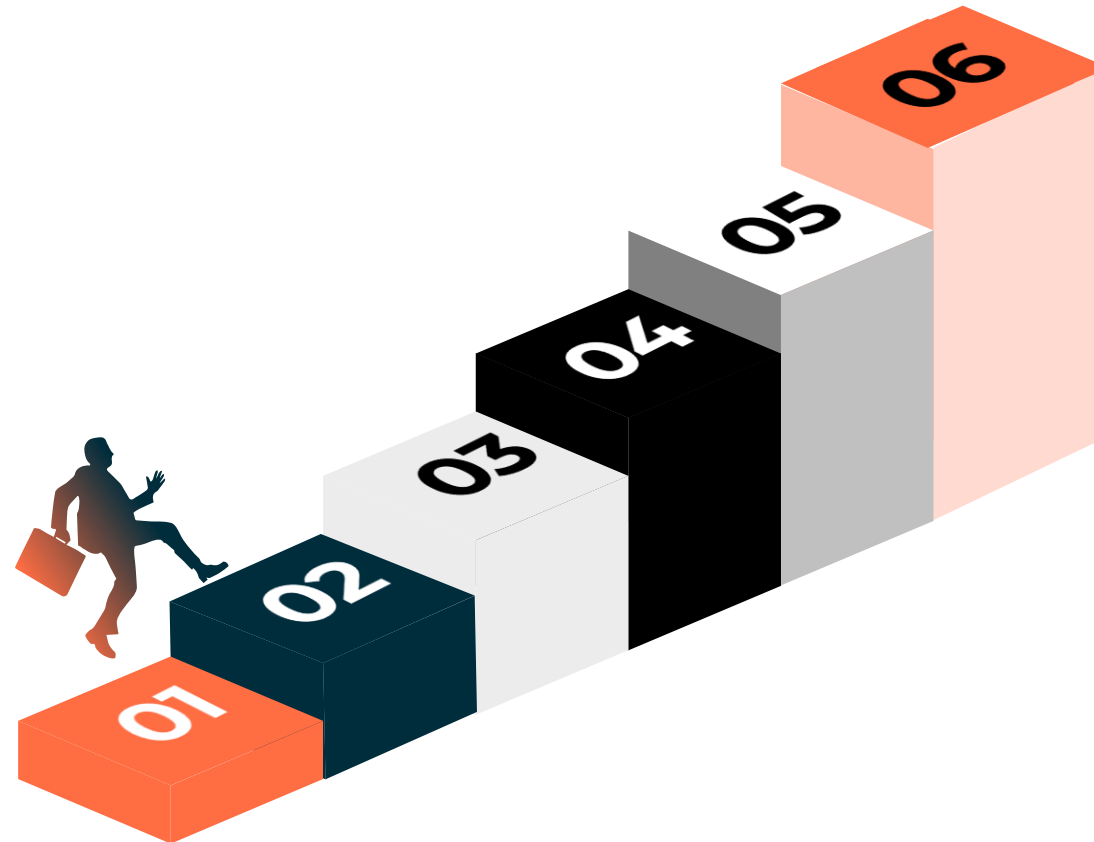
- Asset Discovery
- Communication Relationships in OT
- Organizational/Process Assessment

2. Know your Risks

- Adaption of existing Risk Management Processes
- Rating of identified Risks
- Assessment and Rating of Vulnerability Criticality

3. OT-Security Strategy

- Risk Mitigation Strategy
- Prioritization (Risk reduction, Cost, ..)
- Compliance requirements
- Continuous improvement strategy



4. Mitigation of Top Risks

- Network Segmentation
- Secure Remote Maintenance Access
- OT Threat Detection
- OT Device /Endpoint Security

5. Long Term Planning

- Implementation of further measures
- OT Cybersecurity Awareness
- OT Security Processes

6. OT Security Operation

- OT SOC
- Incident Response
- Continuous Vulnerability Assessment



Thank you!



Frédéric Auburger
Lead OT/IoT Security GER
Head of CoG OT Security DACH

+49 173 594 6061
frederic.auburger@eviden.com