

## **ElevateNow**

**The ECC to S4HANA migration challenge is the biggest workflow innovation opportunity of our time**

**“ERP systems are great systems of record, not great workflow systems. There is lots of white and gray space where things are still happening manually.”**

**Chris Bedi**  
CDIO, ServiceNow

# The transformation challenge in ERP



## Difficult to innovate

ERP suites have become complex with heavy customization, limiting the ability to add new innovations quickly and burdening teams with technical debt.



## Inefficient manual processes across silos

Modern ERP processes span multiple systems of records. Manual processes are often still managed in spreadsheets and emails.



## Poor experiences

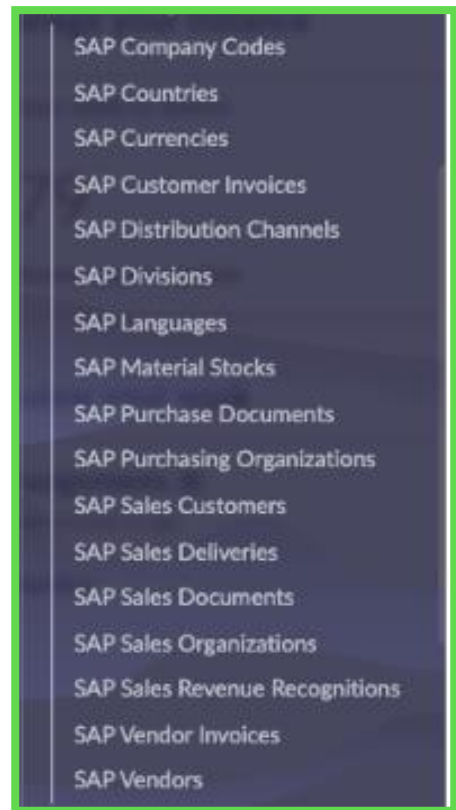
Modern users are underserved by ERPs designed for power users. ERPs were not designed to support organizations wanting to deliver a digital employee experience.

# ServiceNow is SAP ready

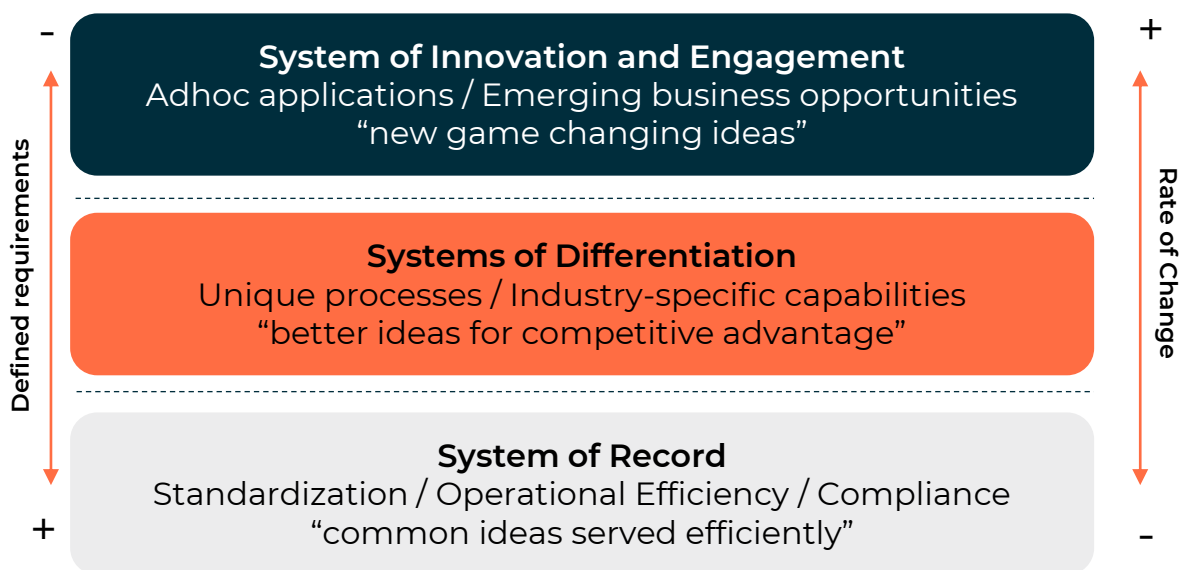
With 100+ SAP ready integration hub actions.

Standard SAP Table Structures.

ServiceNow is now SAP ready out of the box.

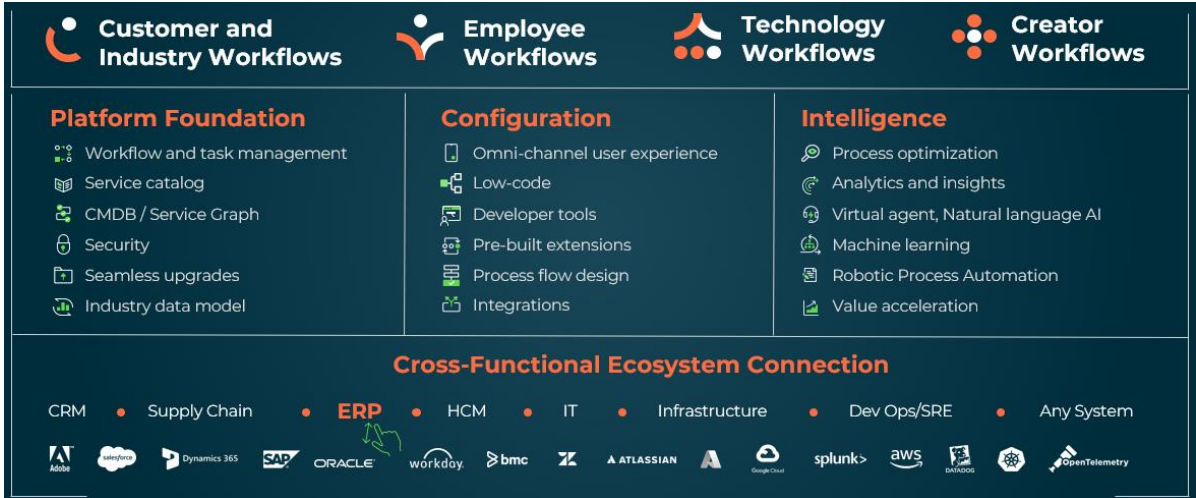


ServiceNow and SAP combined will be the systems of differentiation for years to come.



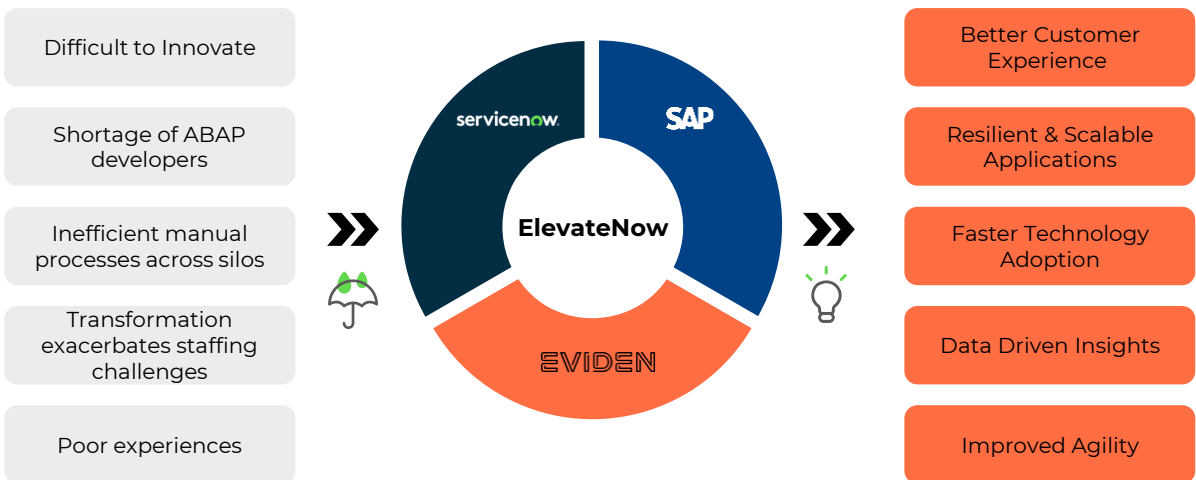
# ServiceNow – the system of differentiation and innovation

Now is the opportunity to re-think the ERP strategy with complementary cloud-based solutions.



## Eviden ElevateNow for SAP

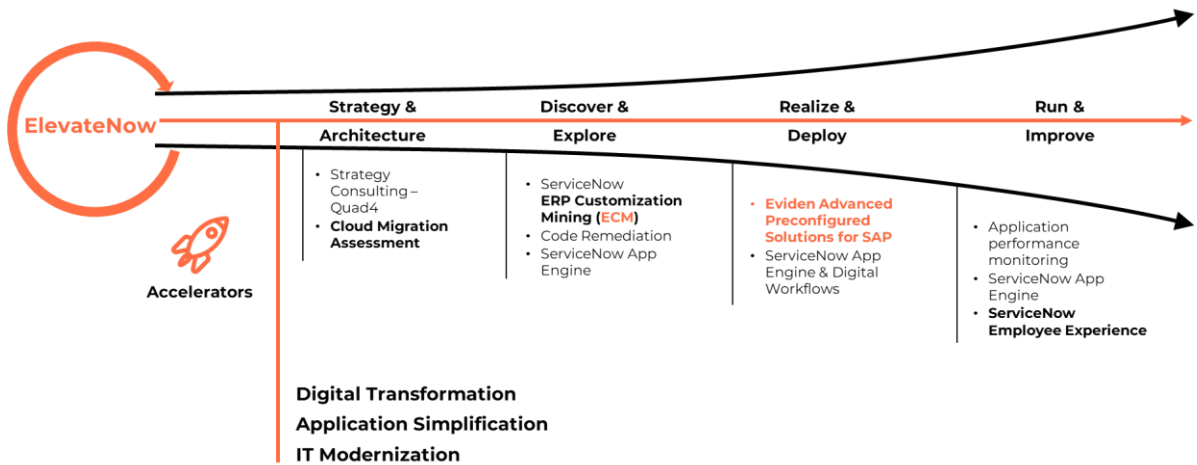
SAP to S/4 Hana migrations present multiple complex challenges to the modern enterprise.



**Eviden ElevateNow for SAP** helps in **portability of complex innovations**, simplifying the digital core, **increasing innovation velocity**, and empowering a **value-add user experience on a unified platform**.

# Eviden Digital Cloud Transformation Approach:

The journey towards Cloud – ElevateNow



## How Can Eviden and ServiceNow help?

### De-risk the S/4HANA transformation

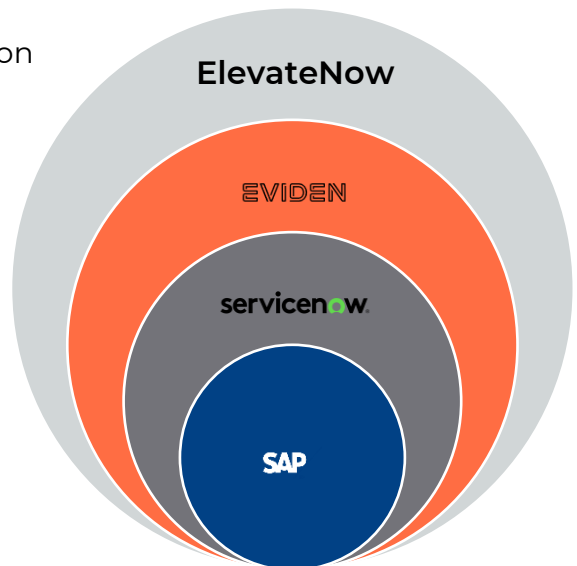
- Eviden and ServiceNow will enable the de-coupling of the Organizational transformation and the IT transformation
- Identify and plan migrations through the ServiceNow workflow automation platform

### Enable migration with a clean ECC Core

- Identify candidates for rebuild, enabling data hooks directly into ServiceNow

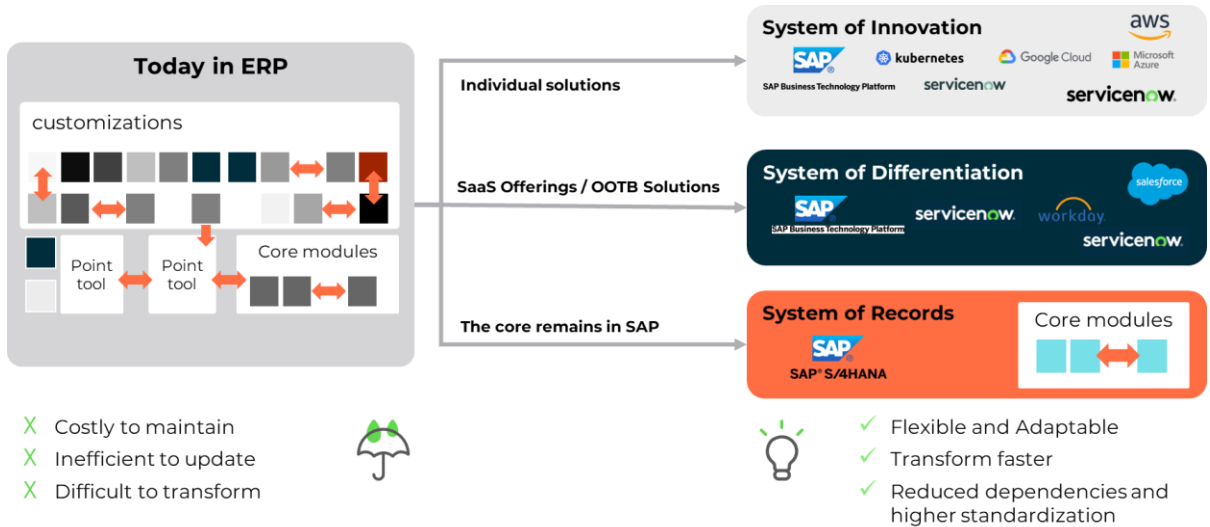
### Migrate with low-code/ no-code innovations

- Utilize ServiceNow low-code/no-code App Engine to quickly migrate custom ECC innovations



# The Solution

ERP customization mining in conjunction with the native System of Differentiation and Innovation capabilities of ServiceNow.



# The Benefits

## Accelerated Adoption:

A clean digital core allows for accelerated adoption of dynamic business expectations.

## Frictionless Migration:

Separation between systems of record and systems of engagement and innovation layers reduces risk of from all in one go lives.

## Resilient Innovation:

A revolutionized and unified single-platform user engagement layer drives innovation through the entire transformation and transformation to digital.



## Contact:

**Paul Jenkins**, ServiceNow Practice, Eviden

**Mark Edwards**, ServiceNow Practice, Eviden

**Richard Motteram**, ServiceNow Practice, Eviden

**Puneet Toshniwal**, SAP Practice, Eviden

## About the Eviden ServiceNow Practice

Elite partner for ServiceNow® globally; providing design, implementation, and support services to customers worldwide. Engage ESM helps customers improve their performance across IT, Operations, Customer Service, Security, and HR – and extend the value of existing investments in ServiceNow®.

## About Eviden<sup>1</sup>

Eviden designs the scope composed of Atos' digital, cloud, big data and security business lines. It will be a global leader in data-driven, trusted and sustainable digital transformation. As a next generation digital business with worldwide leading positions in digital, cloud, data, advanced computing and security, it brings deep expertise for all industries in more than 53 countries. By uniting unique high-end technologies across the full digital continuum with 57,000 world-class talents, Eviden expands the possibilities of technologies for enterprises and public authorities, helping them to build their digital future. Eviden is an Atos Group business with an annual revenue of c. € 5 billion.

## About Atos

Atos is a global leader in digital transformation with 112,000 employees and annual revenue of c. € 11 billion. European number one in cybersecurity, cloud and high performance computing, the Group provides tailored end-to-end solutions for all industries in 71 countries. A pioneer in decarbonization services and products, Atos is committed to a secure and decarbonized digital for its clients. Atos is a SE (Societas Europaea) and listed on Euronext Paris.

The [purpose of Atos](#) is to help design the future of the information space. Its expertise and services support the development of knowledge, education and research in a multicultural approach and contribute to the development of scientific and technological excellence. Across the world, the Group enables its customers and employees, and members of societies at large to live, work and develop sustainably, in a safe and secure information space.

Learn more at: [atos.net](https://atos.net)

<sup>1</sup> Eviden business is operated through the following brands: Alia Consulting, AppCentrica, ATHEA, Atos Syntel, Bull, Cloudamize, Cloudreach, Cryptovision, DataSentic, digital.security, Eagle Creek, EcoAct, Edifixio, Energy4U, Engage ESM, Forensik, IDEAL GRP, IDnomic, In Fidem, Ipsotek, Maven Wave, Miner & Kasch, Motiv, Nimbix, Processia, Profit4SF, science+computing, SEC Consult, Visual BI, Worldgrid, X-Perion, zData

Eviden is a registered trademark. © Eviden SAS, 2023.

Confidential information owned by Eviden SAS, to be used by the recipient only. This document, or any part of it, may not be reproduced, copied, circulated and/or distributed nor quoted without prior written approval from Eviden SAS.