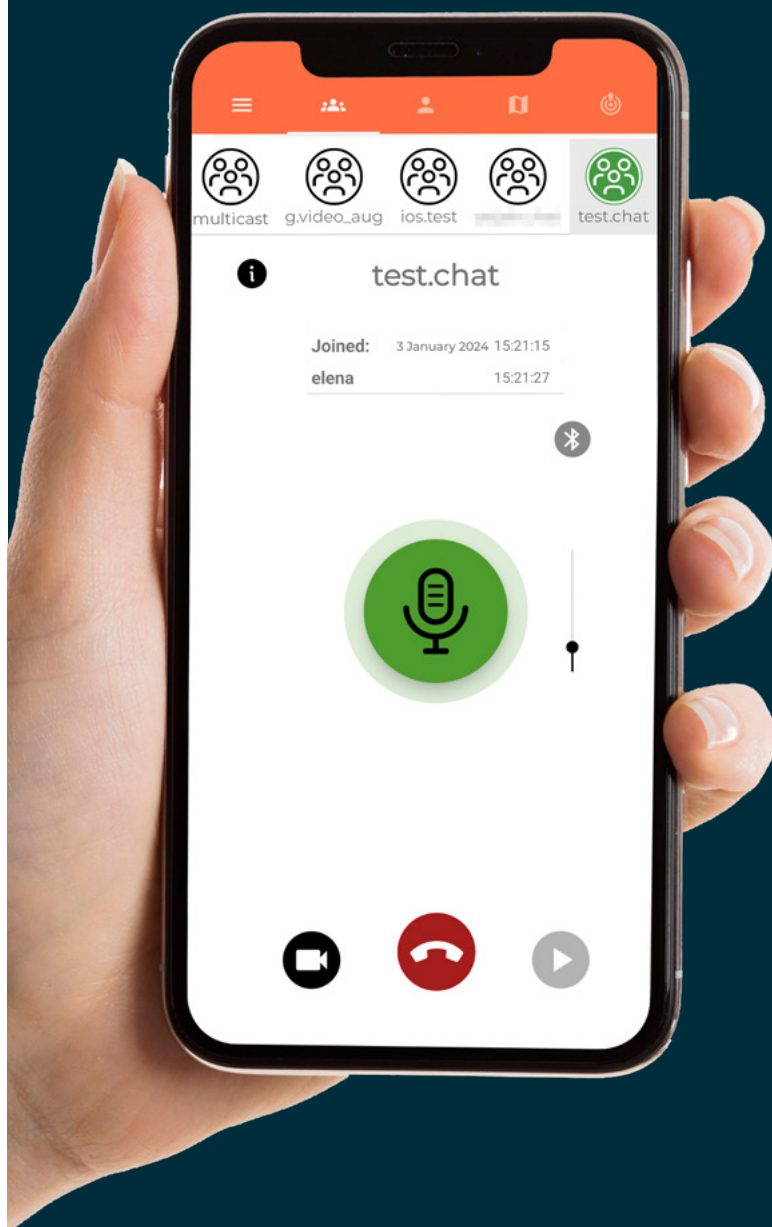


EVIDEN

Lifelink MCx
Connect

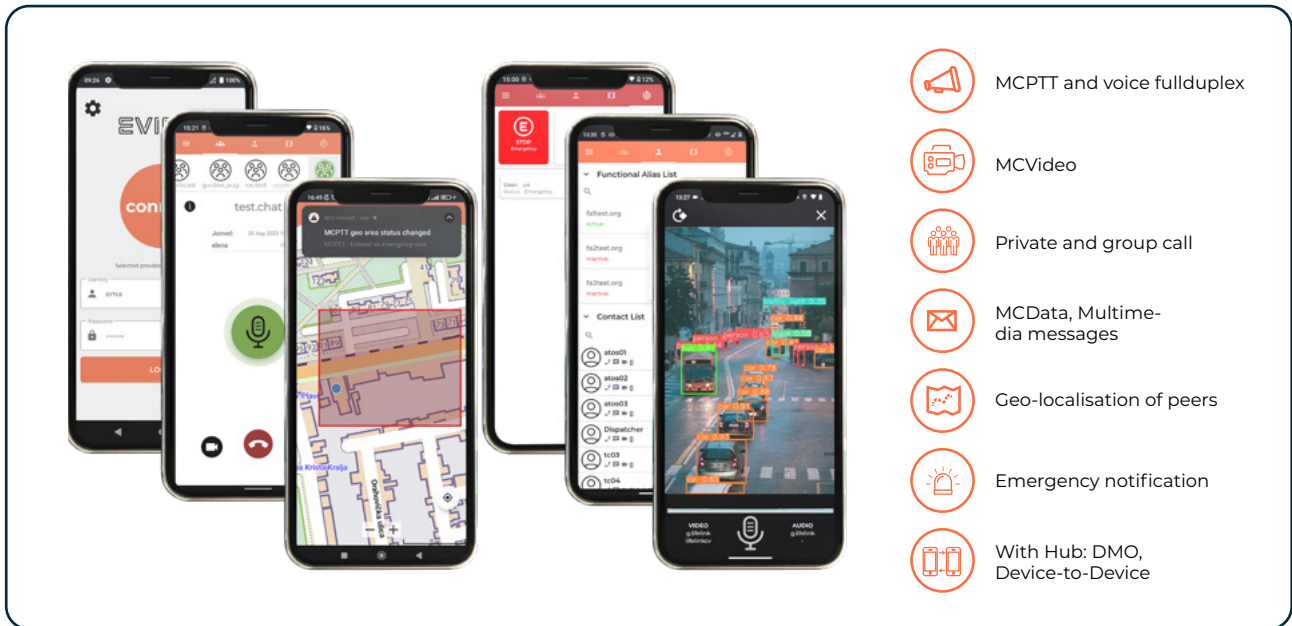
**Full
featured
broadband
for Mission-
Critical
Services**



Overview

From narrow-band to full featured broadband for Mission-Critical Services

- Lifelink MCx Connect is Eviden's 3GPP-compliant Mission-Critical Solution. It ensures the transition from traditional narrow-band push-to-talk to broadband connectivity over LTE with a smooth migration to 5G — whether it is on a private, public or hybrid network.
- MCx Connect is available both on Android and iOS; it also ensures compatibility with the growing ecosystem of ruggedized smart devices designed specifically for mission critical users, thus enabling that the whole solution can be tuned to the specific industry and customer context.
- With an optional Lifelink Hub device, Direct Mode Operation (DMO) features are available to provide voice and data connectivity in case no mobile coverage is available.



Key features

- Push-To-Talk and full duplex voice
- 3GPP compliant multimedia communication
- MCPTT, MCVideo, MCDData both in group- and individual communication
- Broadband eMBMS multicast video and voice*
- Emergency notification
- Geolocation tracking and status
- Secure communication, VPN based
- Integration of auxiliaries on demand
- Interworking / gateway to other PMR technologies**
- Adaptable low bandwidth Mission Critical Communication
- Direct Mode Operations (DMO)***

Benefits

- Provides **Professional Mobile Radio features** such as: Group Call, Individual Call, Emergency Call.
- Exchange sensitive data, and information in a **secured environment**
- **Multi-tenant configuration** allows complex organizational, and deployment scenarios
- **Flexibility** - Fully virtualized and flexible deployment model with small footprint
- **Scalability** - Scales from simple organization to complex multi-tenant deployment
- **Security** - VPN encrypted communication, Secure ID management
- **Resilient** - High Availability Architecture
- **User friendly** - Straightforward, easy-to-use and configure thanks to a dedicated provisioning application
- **Bandwidth optimised communication** for low-bandwidth situations, eg. PPDR frequencies or satellites connections.
- Direct mode operation (DMO) features allow group communication in situations with no mobile coverage***

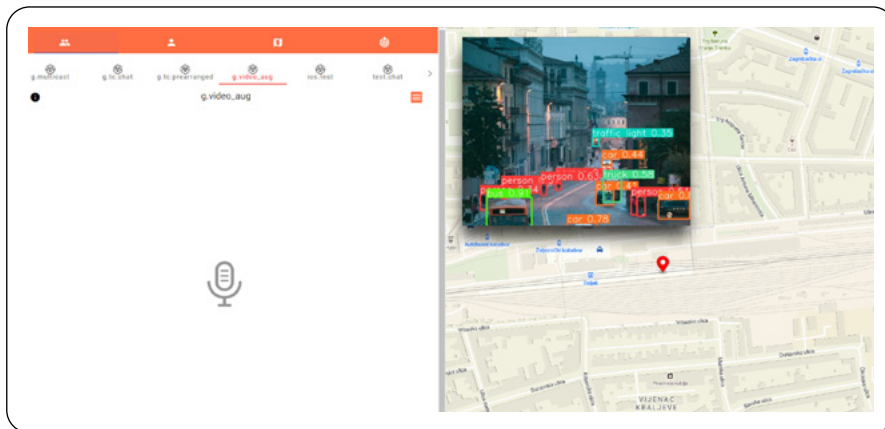
* Available on selected devices only

** Options and subject to specific needs, development and integration necessary

*** Direct mode available with optional Lifelink Hub device

Lifelink MCx Web Client

In addition to the mobile applications, Lifelink MCx Connect can be accessed with a Web browser on a regular tablet or laptop, eg. for a command post.



- The web application can be deployed as an embedded client or on a centralised server
- REST-API allows integration with other Command and Control or other systems
- Supports multiple parallel video streams
- Highly customizable UI thanks to its HTML 5 based adaptive design to address different Use Cases

Advanced Features

Lifelink MCx Connect advanced features are available to address specific use cases and deployment scenarios.

Computer Vision – Realtime Video Analytics

- Realtime image analytics of MCVideo streams
- A wide range of models are available to address specific business scenarios; e.g hazard identification, object recognition
- Can be integrated with any video source

Interworking Function for Transport Industry (Demonstrator)

Ensures a smooth transition from SIP-R to FRMCS:

- Voice and data between FRMCS and SIP-R
- Functional Numbering to Functional Aliases
- Mapping SIP-R to SIP and vice versa
- Interworking for location dependent addressing
- GPS location info and SCP/IN location information
- Compliant with 3GPP/ETSI and UIC

Interworking Function for Public Safety and Defense (Demonstrator)

- Ensures individual and group voice communication between PPDR narrowband and 3GPP MCx services.



AI processed live video feed with object identification

Lifelink MCx Management Console

The Web-based, multi-tenant, self-administration console enables the organisation to setup, manage and monitor the Lifelink MCx solution and provides the following features:

ID	identity	mcptt	mcddata	mcvideo	Actions
1011	g chat	✓	✓	✗	EDIT DELETE
1012	g prearranged	✓	✓	✓	EDIT DELETE
1013	g broadcast	✓	✗	✗	EDIT DELETE
1014	g test	✓	✗	✓	EDIT DELETE
1015	geo	✗	✓	✗	EDIT DELETE
1016	sds	✗	✓	✗	EDIT DELETE
1017	video	✗	✗	✓	EDIT DELETE
1018	atlas chat	✓	✗	✗	EDIT DELETE
1019	atlas prearranged	✓	✗	✗	EDIT DELETE
1020	g group01	✓	✗	✗	EDIT DELETE
1021	g tc chat	✓	✗	✗	EDIT DELETE
1022	g tc prearranged	✓	✗	✗	EDIT DELETE
1023	android chat	✓	✗	✗	EDIT DELETE
1024	test chat	✓	✓	✓	EDIT DELETE

User and Group Management

- User set up
- Assign users to Groups
- Assign services to users

Management of Tenants

- Set up dedicated tenants
- Assign an organization & domain name to a tenant
- Manage & monitor tenants

Management of System Components

- Server & virtual Infrastructure
- VPN services
- Advanced features

Pricing Principles

The pricing is based on the combination of the deployment model and the chosen feature set.

Deployment Models



Tactical / On-Premise

- Dedicated hardware – As part of tactical network solutions
- CAPX model – One time fee



Hosted / SaaS

- Public or private cloud
- Over-the-Top (OTT) or full MNO integration
- OPEX model – One time installation fee + annual subscription

Feature sets

Standard:

Android/iOS App, Management Console, MCPTT, MCDData, MCVideo, Individual call, Group call, Emergency call, Geolocation tracking and status

Advanced:

Web Client, Interworking Function (IWF), Functional Numbering, eMBMS, Device-to-Device (D2D), Video analytics, RTSP video gateway, HA configuration

Product Datasheet

Feature	Android	iOS	Web Client	Web Mgt Console
▶ 3GPP Rel 16 Support				
Compliant MCx solution. ETSI Plugtests performed: - MCx: 2020, 2021, 2023 - FRMCS: 2022, 2023, 2024	✓	✓	✓	-
Service MCPTT	✓	✓	✓	-
Service MCDATA	✓	✓	✓	-
Service MCVideo	✓	✓	✓	-
FRMCS (Functional aliases, geographical area incl. dynamic alias)	✓	✓	✓	-
IWF (Interworking function) support for legacy PLMR networks, project specific	-	-	-	Roadmap
▶ Group Calls & Video				
Multiple parallel groups can be active simultaneously	✓	✓	✓	-
Voice: Pre-arranged with auto commencement	✓	✓	✓	-
Voice: Chat	✓	✓	✓	-
Voice: Push-To-Talk Half-Duplex	✓	✓	✓	-
Text multimedia Messaging & File transfer (Data)	✓	✓	Text, Multimedia on Roadmap	-
Group Video Calls	✓	✓	✓	-
eMBMS support subject to enabled device for Voice and Video	✓	-	-	-
▶ Individual Calls & Video				
Full Duplex Voice & Video calls	✓	✓	Roadmap	-
Text multimedia Messaging & File transfer (Data)	✓	✓	Roadmap	-
▶ Contact List and Status				
User can be a member of multiple organisational hierarchies	✓	✓	✓	-
Sorted by online status, then alphabetically	✓	✓	✓	-
Filtering of organisational hierarchy	✓	✓	✓	-
Searchable by name	✓	✓	✓	-
Indication of battery status	✓	✓	Roadmap	-
▶ Location and Map				
Online maps	-	-	✓	-
Offline maps	✓	✓	Roadmap	-
View position & status of all users within the same tenant	✓	✓	✓	-
See the status of group members: Online status, Position, Emergency status	✓	✓	Roadmap	-
Displaying orientation of users	✓	✓	Roadmap	-
▶ Advanced Video Functions				
Remote camera RTSP feeds via central MCx server *	✓	✓	✓	-
Server based AI Video Analytics feed for object identification	✓	✓	✓	-

* See list of supported models

Feature	Android	iOS	Web Client	Web Mgt Console
► Bandwidth Requirements				
Video sharing, configurable 100 kbps – 3.5 Mbps. Codec: H.264	✓	✓	✓	-
PTT calls & full duplex calls: Configurable 6.6 – 23.05 kbps. Codec: AMR-WB	✓	✓	✓	-
► UE Integration and Accessories (on-demand, list of pre-integrated devices available)				
Communications active in locked screen mode (Web Client Windows/Linux only)	✓	✓	✓	-
Support of Push-to-Talk via H/W PTT Button (subject to Smartphone) *	✓	-	Roadmap	-
► D2D Communication (similar to DMO)				
Works with Lifelink Hub	✓	-	-	-
D2D: Upper and lower radio communication on dedicated frequencies, works without LTE coverage	✓	-	-	-
Voice (Push-to-talk), geo positioning and very short messages	✓	-	-	-
Gateway mode between LTE & D2D	Prototype	-	-	-
Automatic switch between LTE and D2D mode	Prototype	-	-	-
► General				
Multi-language support	✓	Roadmap	Roadmap	Roadmap
Smartphones*	✓	✓	-	-
Tablet*	✓	-	-	-
► System Management				
Web based UI for user admin & System Admin	-	-	-	✓
User- and Subscriber Management	-	-	-	✓
Independant configuration for multiple user organisation (Multitenant)	-	-	-	✓
OpenID Connect Authentication	-	-	-	✓
QR-code based configuration	✓	✓	✓	✓
Over the air updates of client S/W	✓	On request	-	-
Over the air updates of contact lists (on login)	✓	✓	✓	-
Management and monitoring of the MCx platform	-	-	-	✓
► Security features				
VPN between MCx server / MCx client	✓	✓	✓	✓
E2E Encryption	Roadmap	Roadmap	Roadmap	-
Alert, Imminent Peril, Emergency: Send status to all tenant members	✓	✓	Roadmap	-
Ambient Listening	Roadmap	Roadmap	Roadmap	-
► High Availability Architecture				
Single site redundancy based on infrastructure virtualisation	-	-	✓	✓
Geo-redundancy active-standby support	-	-	✓	✓
Peer-to-peer architecture to interconnect multiple MCx servers	✓	✓	Roadmap	Roadmap
Re-establish / rejoin group calls after disconnect	✓	✓	✓	-
► Hardware & Software Prerequisites				
User Equipment	≥ Android 10 ARM v8a	≥ iOS 13	Current browser	Current browser
On-premise deployment - Minimum system requirements depend on requested feature set and deployment model. - Below sizing does not include servers for VPN, Advanced Features (see above). - Requirements for Application- and Authentication Server: - 50 users: 1 vCPU, 2 GB RAM, 20 GB storage - 100 users: 2 vCPU, 8 GB RAM, 50 GB storage - 500 user: 4 vCPU, 8 GB RAM, 50 GB storage	-	-	✓	✓

* See list of supported models

Connect with us



eviden.com

Eviden is a registered trademark © Copyright 2024, Eviden SAS – All rights reserved.