

# EVIDEN

## Lifelink Multinet

# Multi-network voice dispatching and tracking system





# Combine and coordinate critical calls on different networks with Eviden multi-network voice dispatching and tracking system

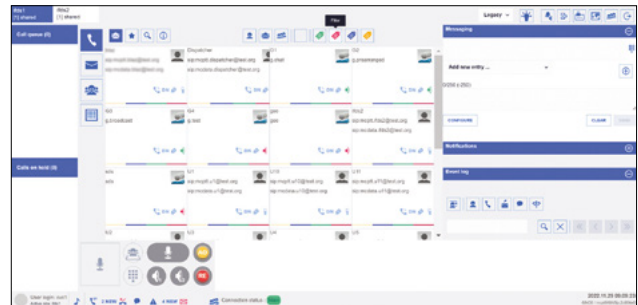
Public safety, energy, transportation, and security organizations strive to manage their operational fleets with the highest levels of security, reliability and effectiveness. Nevertheless, the different types of network technology used are a challenge.

Eviden Lifelink Multinet Dispatcher allows various mission critical communication technologies to be interconnected and provides an user friendly interface for secure and efficient communications between the command-control center and the field staff.

## Multi-Network Dispatcher Key Features

### Interconnects multiple PMR technologies in a single solution

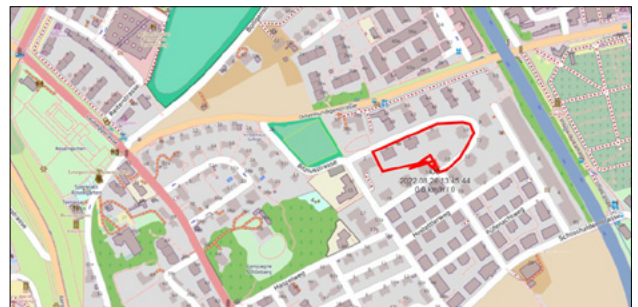
- Different communication technologies such as TETRA, GSM-R, VHF, LTE can be interconnected.
- The central server system can be provided in a redundant configuration and can run on virtualized environments.
- Lifelink Multinet Dispatcher already supports operations in offshore windfarms, offshore oil and gas facilities, public sector and transportation.



## Multi-Network Tracking Features

### Provides comprehensive location-based services

- Features a web-based geo tracking system to support field operations eg. by interworking with sea- and site surveillance systems, enabling features such a touch and call.
- Isolated work protection functions based on location and movement measurements
- Call routing based on geographic location with dynamic mapping and direction to dispatch stations within the user proximity
- Tracking and alarms to ensure the end user location is secured including location playback (snail-trails), Geo-fencing
- Device status and alarms to monitor the status and availability of a user equipment such as battery status, connection quality, and latency



# Product datasheet

## Technical features

### Network technologies

- **Generic:** IP, PSTN, PBX, and SIP-RFC 3261
- **GSM-R:** E1 or SIP-R
- **TETRA:** TETRA Flex DAMM, Rohill TETRA, Hytera TETRA [other PMR technologies upon request]
- **VHF-Marine and VHF-Air Traffic:** ED137 protocol
- Radio over IP (RoIP) with TETRA PEI tunnel for remote operation of TETRA Modems
- RoIP Interface for remote operation of analog interfaces
- SMSC: IP interface for bulk SMS messaging
- Broadband mobile (4G/5G/Wi-Fi), 3GPP compliant

### Management functions

- Role management: personal, parallel and shared roles Phonebook with manual and automatic address tagging Audio routing adjustment
- Local voice recording
- Export of voice calls Export of logs

### Call features

- Private calls: In/out individual full/semi duplex calls, and ambience listening calls
- Group calls: In/out group semi duplex calls, and outgoing broadcast calls
- Conference calls: Create/store/bookmark/split conference
- Call control: Call focus, speech item request, and speech item preemption

### Interconnection features

- Manual multi-network calls interconnection by the dispatcher operator
- Gateway functionality: Automatic interconnection between preconfigured targets
- Tetra specific

### Messages features

**Private messaging:** In/out individual text and status messages

#### Group messaging:

- In/out group text and status messages
- Emergency status, call back request, man down
- Multimedia messaging and file/video transfer
- Message templates and message receipt confirmation

### Supplementary services

- Talking party identification Group mute/unmute
- Call transfer and call forwarding DGNA (\*)
- Temporarily enable/disable (\*)
- Monitoring services (\*)
- Discrete listening (\*)

### Required hardware and operating systems

#### Client PC:

COTS PC or industrial HW, CPU Intel Core Duo or its equivalent, 4GB+ memory, sound cards, USB ports, Windows 10 or better

**Server machine:** Off-the-shelf Intel-based motherboard, CPU and memory (depending on scalability requirements), OS Ubuntu 22.x/Red Hat 8.x or better

Optional: RoIP gateway hardware module translating SIP-based communication to analog voice and PEI/AT commands-based signaling or analog voice with serial port-based squelch control

### Accessories and audio equipment

- COTS Touch Monitor External loudspeakers
- Gooseneck microphone with dedicated PTT Handset with PTT
- Foot PTT
- Headset
- Specific integration of accessory upon request

Connect with us



**eviden.com**

Eviden is a registered trademark © Copyright 2023, Eviden SAS – All rights reserved.